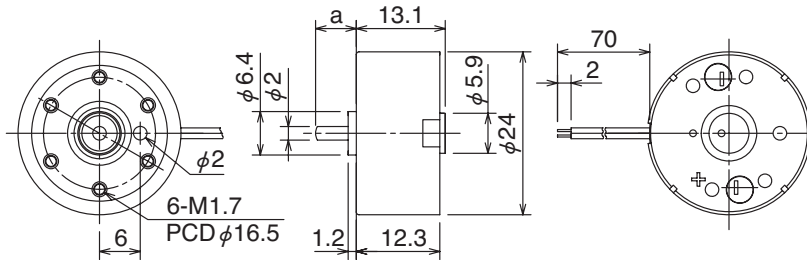




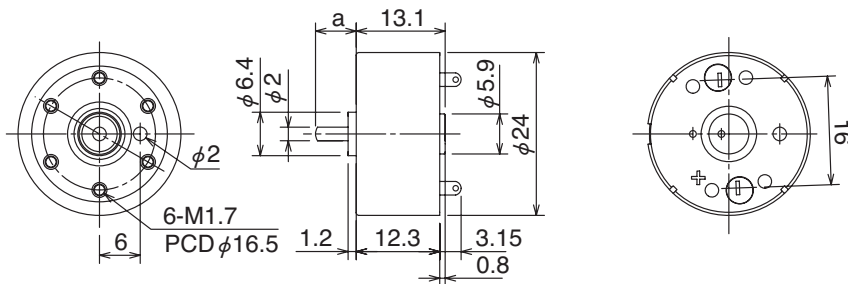
Weight:19.6g

Outline UNIT:mm

● MDN3BL (リード線タイプ/Lead wire type)



● MDN3BT (端子タイプ/Terminal type)



Specifications

Model	Operating Voltage (V)	Rated Voltage (V)	No Load Speed (min ⁻¹)	No Load Current (mA)	Rated Load		Rated Load Speed (min ⁻¹)	Rated Load Current (mA)	Starting Torque		Starting Current (mA)	Shaft Length (mm)
					(gf·cm)	(mN·m)			(gf·cm)	(mN·m)		
MDN3BL3CSAS	0.7 to 6	2.0	2305	16	4.0	0.392	1458	71	10.9	1.07	166	a=6
MDN3BL3LSAS	0.7 to 6	2.0	2305	16	4.0	0.392	1458	71	10.9	1.07	166	a=5
MDN3BL3LSBS	0.7 to 6	2.0	2305	16	4.0	0.392	1458	71	10.9	1.07	166	a=5
MDN3BT3LSBS	0.7 to 6	2.0	2305	16	4.0	0.392	1458	71	10.9	1.07	166	a=5

Characteristics

MDN3BL3CSAS/MDN3BL3LSAS/ MDN3BL3LSBS/MDN3BT3LSBS

