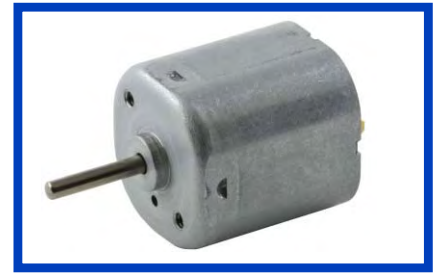
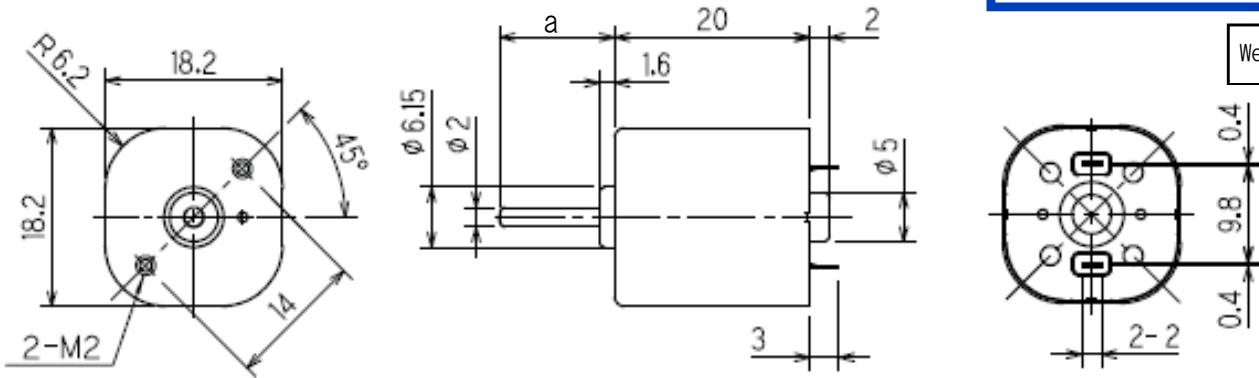


SE18J



Weight : 23.3 g

Outline UNIT:mm

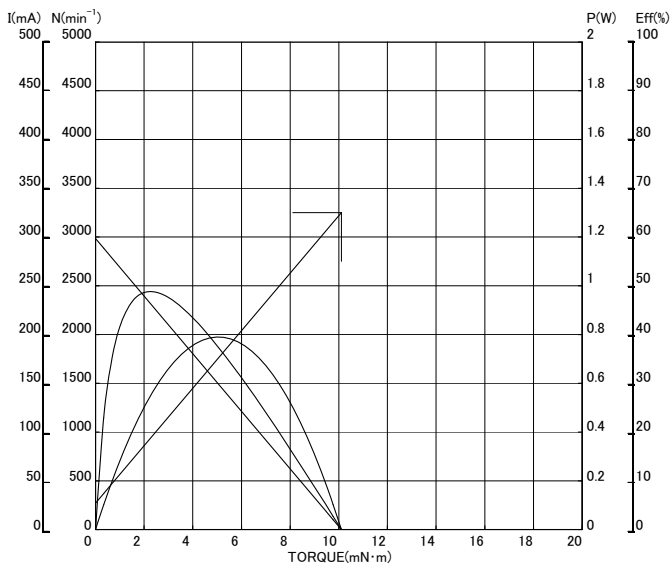


Specifications

Model	Operating Voltage (V)	Rated Voltage (V)	No Load Speed (min^{-1})	No Load Current (mA)	Rated Load		Rated Load Speed (min^{-1})	Rated Load Current (mA)	Starting Torque		Starting Current (mA)	Shaft Length a (mm)		
					($\text{gf}\cdot\text{cm}$)	($\text{mN}\cdot\text{m}$)			($\text{gf}\cdot\text{cm}$)	($\text{mN}\cdot\text{m}$)		6.3	12.8	14.9
SE18J0TTM	8 to 13	12.0	2985	27	30.6	3.000	2099	115	103.2	10.11	325	6.3	12.8	14.9
SE18J1DTM	8 to 13	12.0	5930	68	40.8	4.000	4756	295	206.2	20.21	1215	6.3	12.8	14.9

Characteristics

SE18J0TTM



SE18J1DTM

