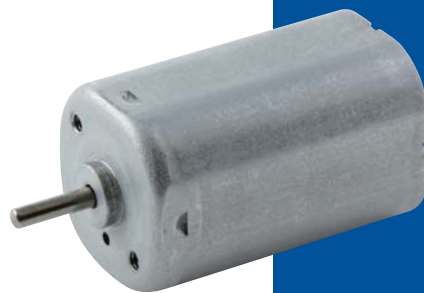
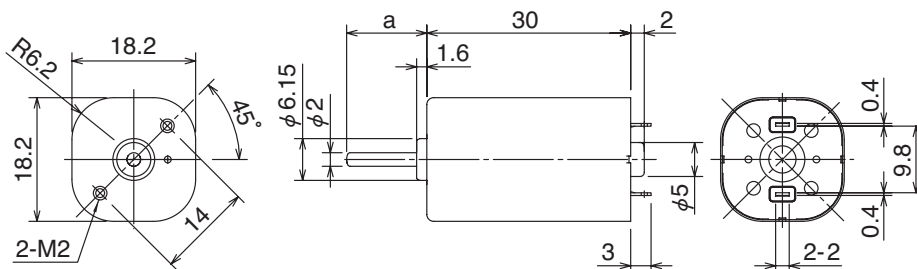


# SE18M



Weight:40.2g

## Outline UNIT:mm



## Specifications

Model	Operating Voltage (V)	Rated Voltage (V)	No Load Speed (min <sup>-1</sup> )	No Load Current (mA)	Rated Load		Rated Load Speed (min <sup>-1</sup> )	Rated Load Current (mA)	Starting Torque		Starting Current (mA)	Shaft Length (mm)
					(gf·cm)	(mN·m)			(gf·cm)	(mN·m)		
SE18M1ETM	8 to 13	12.0	2985	32	51.0	5.0	2449	170	284.1	27.84	801	a=11.7
SE18M1NTM	8 to 13	12.0	5329	99	71.4	7.0	4558	441	494.0	48.41	2463	a=11.7

## Characteristics

