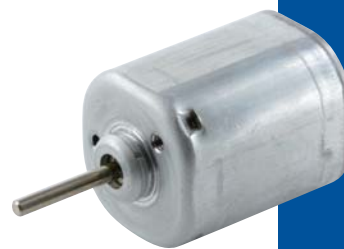
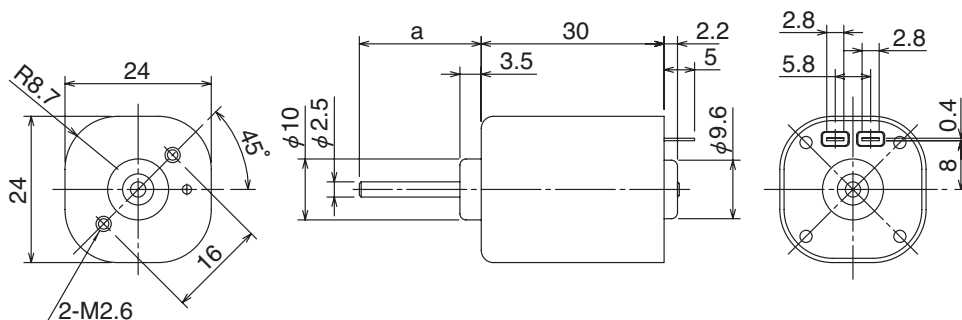


# SE24M



Weight:57.0g

## Outline UNIT:mm



## Specifications

Model	Operating Voltage (V)	Rated Voltage (V)	No Load Speed (min <sup>-1</sup> )	No Load Current (mA)	Rated Load		Rated Load Speed (min <sup>-1</sup> )	Rated Load Current (mA)	Starting Torque		Starting Current (mA)	Shaft Length (mm)
					(gf·cm)	(mN·m)			(gf·cm)	(mN·m)		
SE24M1TTC	8 to 13	12.0	6060	175	100.0	9.8	4764	747	467.7	45.83	2850	a=20

## Characteristics

