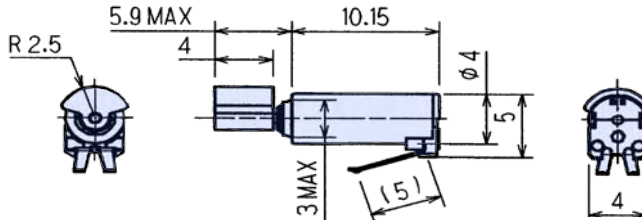


KHN4NX (L10)

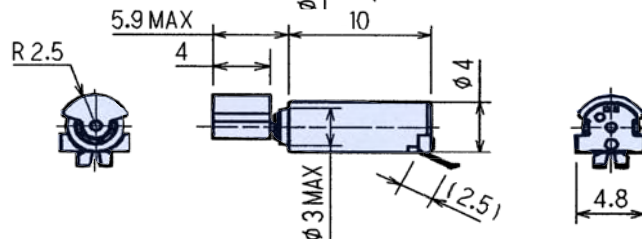


Outline UNIT:mm

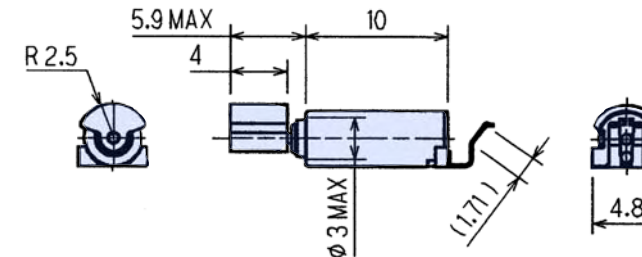
● Terminal: Shrimp Type



● Terminal: Fin Type



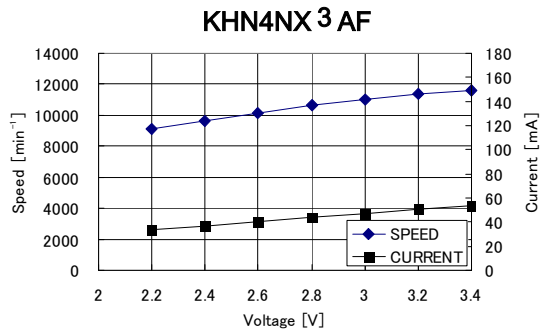
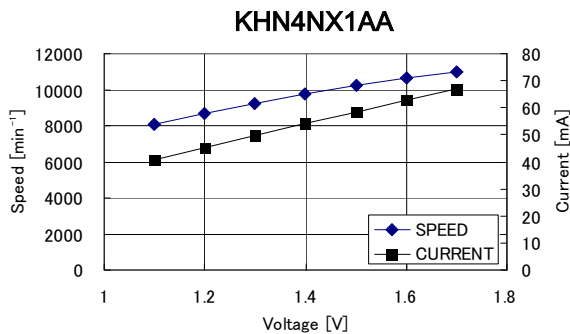
● Terminal: Dolphin Type



Specifications

Model	Operating Voltage (V)	Rated Voltage (V)	Rated Speed (min ⁻¹)	Rated Current (mA)	Starting Voltage (V)	Starting Current (mA)	Vibration (N)	Weight (g)	Volume (mm ³)
KHN4NX1AA	1.1 to 1.5	1.3	9200	48	0.4	63	0.62	0.55	125
KHN4NX3AF	2.7 to 3.3	3.0	11000	45	0.7	55	0.88	0.55	125

Characteristics

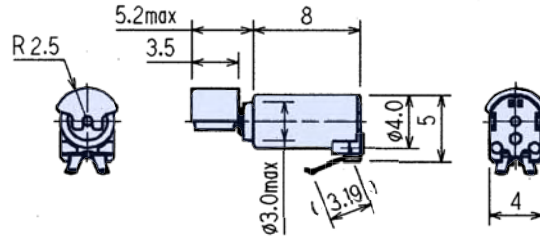


KHN4NZ

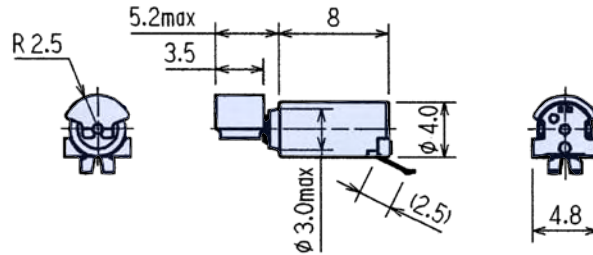


Outline UNIT:mm

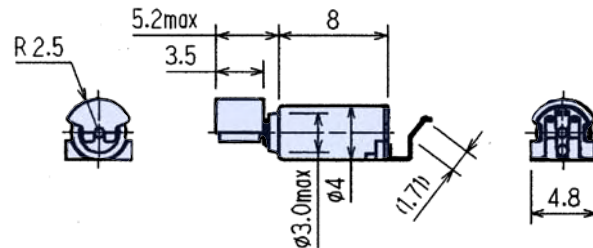
● Terminal:Shrimp Type



● Terminal:Fin Type



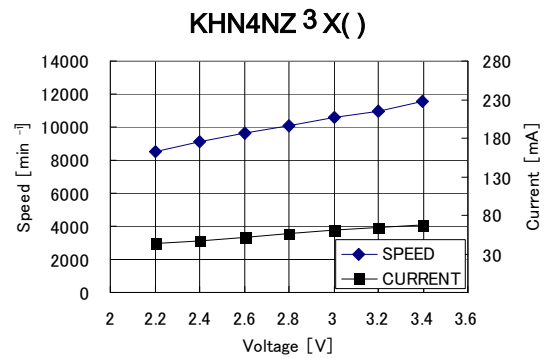
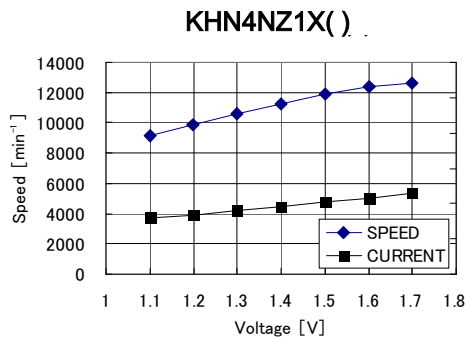
● Terminal:Dolphin Type



Specifications

Model	Operating Voltage (V)	Rated Voltage (V)	Rated Speed (min ⁻¹)	Rated Current (mA)	Starting Voltage (V)	Starting Current (mA)	Vibration (N)	Weight (g)	Volume (mm ³)
KHN4NZ1X()	1.1 to 1.5	1.3	10600	69	0.4	84	0.74	0.43	100
KHN4NZ3X()	2.7 to 3.3	3.0	10600	60	0.7	70	0.74	0.43	100

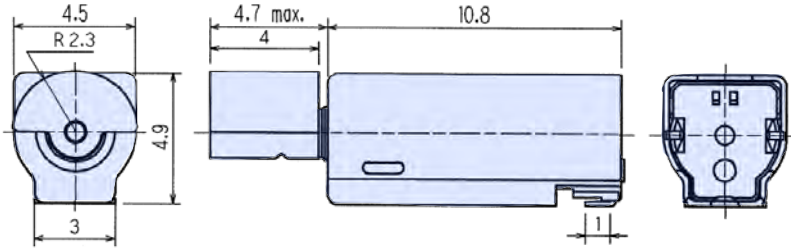
Characteristics



KHN4NX (Reflow)



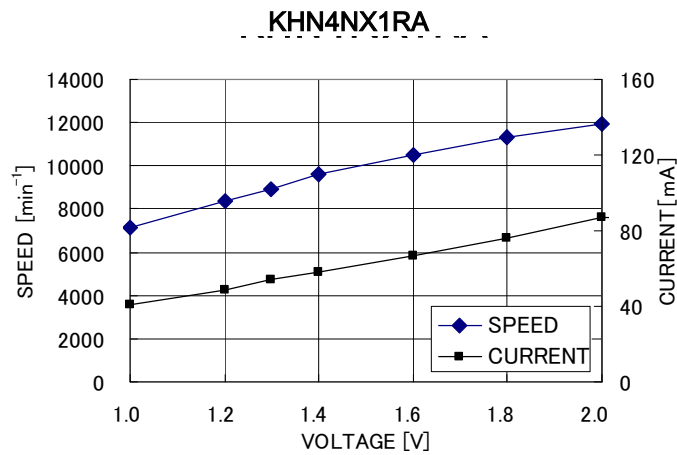
Outline UNIT:mm



Specifications

Model	Operating Voltage (V)	Rated Voltage (V)	Rated Speed (min ⁻¹)	Rated Current (mA)	Starting Voltage (V)	Starting Current (mA)	Vibration (N)	Weight (g)	Volume (mm ³)
KHN4NX1RA	1.1 to 1.5	1.3	9000	52	0.5	74	0.46	0.55	125

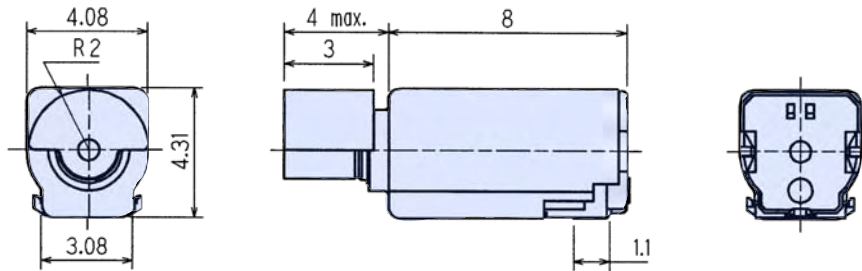
Characteristics



KHN4NZ (Reflow)



■ Outline UNIT:mm



■ Specifications

Model	Operating Voltage (V)	Rated Voltage (V)	Rated Speed (min ⁻¹)	Rated Current (mA)	Starting Voltage (V)	Starting Current (mA)	Vibration (N)	Weight (g)	Volume (mm ³)
KHN4NZ2RB	1.7 to 2.3	2.0	13000	77	0.6	94	0.42	0.43	140

■ Characteristics

